

## Prevent Catastrophic Accidents!

Avoid Trailer Creep and  
Premature Departure with  
**WHEEL CHOCK SAFETY SYSTEMS**

### SC-8 ALUMINUM CHOCK

**Features:**

- "Claw" like bottom assures dependable grip on any ground surface conditions
- Lightweight and reliable
- Chock fits snugly under tire contour for maximum holding power

- Often preferred for snow and ice conditions
- Extruded Aluminum

**Size:** 7" w x 11-1/2" long x 8" high  
**Weight:** 6lbs



Industry's **Most Reliable All Weather Wheel Chock**

- **STRONG**
- **LIGHT**
- **DEPENDABLE**

# WHEELCHOCK SAFETY SYSTEM

## PREVENT TRAILER CREEP & PREMATURE DEPARTURE

Custom contour design fits snugly against the truck tires to prevent the unintentional forward movement of a stationary trailer.

## ECONOMICAL PROTECTION

Inexpensive form of security which helps protect loading dock personnel.

## SIMPLE OPERATION

Once trailer has docked, the driver or dock attendant removes the wheel chock from the sturdy wall bracket and wedges it manually in front of the rear tire. Once loading operations are complete, the chock is removed and stored.

## VISIBLE INSTRUCTIONS

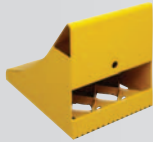
Safety Yellow Caution Sign alerts drivers to use wheel chocks. Printed in both standard and mirror image (allowing driver to see the sign in his/her mirror as they back up), ensures clear visibility.

### IC-10 ICE CHOCK

#### Features:

- "Tooth" like bottom assures reliable grip on icy/slippery ground surfaces
- Lightweight and dependable
- Maximum holding power for snow and ice
- Powder coated safety yellow for high visibility

**Material:** Formed Steel  
**Size:** 8" wide x 10-1/2" long x 9-1/4" high  
**Weight:** 9lbs

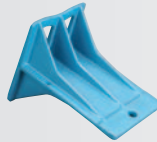


### CBI-29 CAST IRON CHOCK

#### Features:

- Cast ductile iron for impressive strength
- Painted blue for good visibility
- Completely reversible for simple use

**Size:** 8" wide x 12" long x 9" high  
**Material:** Cast Ductile Iron  
**Weight:** 28lbs

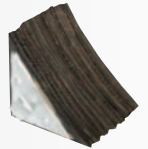


### 88-8 LAMINATED CHOCK

#### Features:

- Recycled rubber laminates compressed and fastened under high pressure
- Galvanized steel sides

**Size:** 8" w x 8" long x 8" high  
**Material:** Recycled Fabric Reinforced Rubber Laminates  
**Weight:** 14lbs  
**ALSO AVAILABLE AS 88-8XL**  
**Size:** 11-1/4" wide x 14" long x 14" high  
**Weight:** 50lbs



### CMH-94 RUBBER CHOCK

#### Features:

- One piece solid rubber
- Integral handle

**Material:** 80 Durometer Rubber  
**Size:** 7-1/4" wide x 9-3/4" long x 7-3/4" high  
**Weight:** 13lbs



### WC-5810 RUBBER CHOCK

#### Features:

- Solid rubber is most durable
- Hook for chain fastening

**Material:** 80 Durometer Rubber  
**Size:** 8" wide x 10" long x 5" high  
**Weight:** 12lbs



### CBI-087 CAST IRON CHOCK

#### Features:

- Cast ductile iron for high strength
- Painted yellow for high visibility

**Material:** Cast Ductile Iron  
**Size:** 8-1/2" wide x 7-1/4" long x 8-1/2" high  
**Weight:** 14lbs

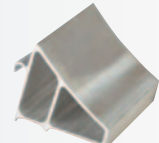


### SC-6 ALUMINUM CHOCK

#### Features:

- Lightweight
- Excellent surface grip on tire & ground

**Material:** Aluminum  
**Size:** 6" wide x 6.8" long x 6" high  
**Weight:** 3.5lbs

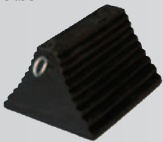


### 68-9 PYRAMID CHOCK

#### Features:

- Economical construction
- Handles for chain fastening

**Material:** 80 Durometer Rubber  
**Size:** 8" wide x 9" long x 6" high  
**Weight:** 9lbs



### 811-11 URETHANE CHOCK

#### Features:

- High visibility
- Material: Orange Urethane

**NOT RECOMMENDED ON ICE**  
**Size:** 11" wide x 8" long x 8" high  
**Weight:** 4.5lbs

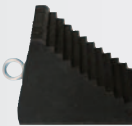


### MWC-32 CHOCK

#### Features:

- Good stability over others in this class
- Material: 80 Durometer Rubber

**Size:** 6-1/2" wide x 9-1/2" long x 8-1/2" high  
**Weight:** 13lbs



### CC-07 CENTURY-CHOCK

#### Features:

- Reversible chock design
- One-piece cast construction

**Material:** Cast Aluminum Alloy  
**Size:** 10" base x 6-1/4" wide x 9" high  
**Weight:** 7.5lbs



## OTHER DBS PRODUCTS

### Dock Lights



### Trailer Stands



### Knuffi



### Parking Blocks



### Speed Bumps



### Traffic Control System



### Bumpers



Dock Bumper Solutions Inc.  
[www.doksolutions.com](http://www.doksolutions.com)

181 Regina Road  
Vaughan ON, Canada L4L 8M3

Tel: 905-850-4015  
E-mail: [info@doksolutions.com](mailto:info@doksolutions.com)  
Web: [www.doksolutions.com](http://www.doksolutions.com)

**DBS**  
Driven to Satisfy