

LIMITED PRODUCT WARRANTY

Dock Bumper Solutions Inc. warrants for a period of three hundred and sixty-five (365) days from date of installation, or three hundred and seventy-five (375) days from date of shipment, whichever shall occur first, that all products and service parts shall be free from defects in workmanship and material. If the equipment or any part thereof, is returned, transportation charges pre-paid, within the periods specified above, and if examination by Dock Bumper Solutions, Inc. discloses to its satisfaction that the said equipment or part thereof has been defective in workmanship or material, it will deliver to the purchaser, without charge, parts of the first class workmanship and material in exchange for any parts so found to be defective, and Dock Bumper Solutions, Inc. is limited to said exchange. This warranty shall not apply: (1) to maintenance service or adjustment; and (2) to any equipment which shall have been repaired or altered outside of Dock Bumper Solutions, Inc. or its authorized service representatives.

These warranties are in lieu of all other warranties, expressed or implied, including, without limitation, warranties of merchantability and fitness for particular purpose, all other representations to the first user purchaser, and all other obligations or liabilities, including liability or incidental and consequential damages, on the part of Dock Bumper Solutions, Inc. No person is authorized to give any other warranties or to assume any other liability on behalf of Dock Bumper Solutions, Inc. unless made or assumed in writing by Dock Bumper Solutions, Inc.

DOCK BUMPER SOLUTIONS, INC. EXPRESSLY DISCLAIMS AND CUSTOMER WAIVES ALL IMPLIED WARRANTIES INCLUDING WITHOUT LIMITATION, ANY IMPLIED WARRANTIES OF MERCHANTABILITY OR FITNESS FOR A PARTICULAR PURPOSE. DOCK BUMPER SOLUTIONS, INC. SHALL NOT IN ANY EVENT BE LIABLE FOR AND CUSTOMER WAIVES ANY INCIDENTAL, CONSEQUENTIAL OR PUNITIVE DAMAGES OF ANY KIND TO CUSTOMER OR ANY THIRD PARTY, INCLUDING WITHOUT LIMITATION DAMAGES FOR LOST PROFITS, EVEN IF ADVISED OF SAME.

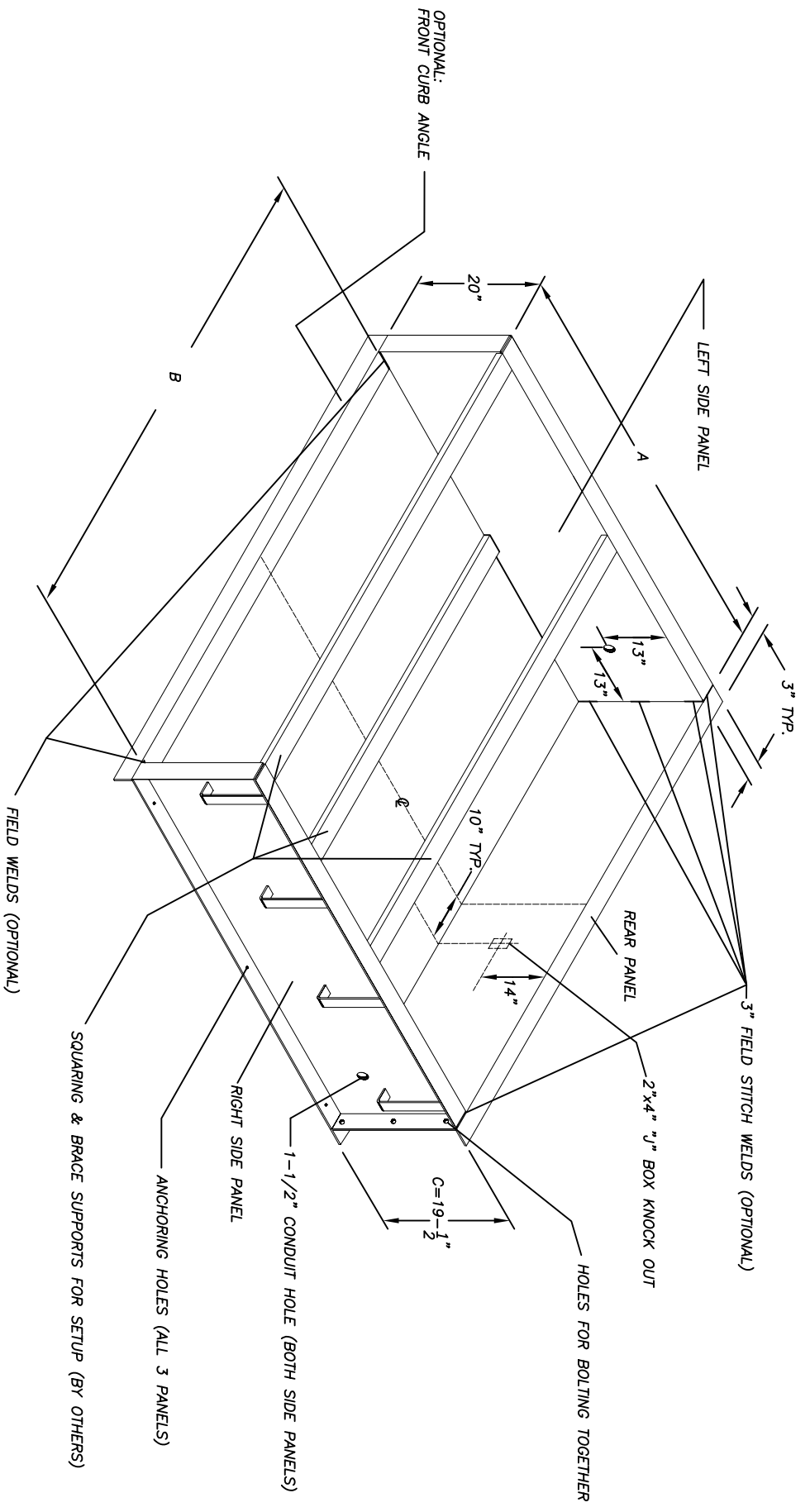
WARNING:

Do not install this product unless you read and understand the warnings and installation instructions contained in this manual. Failure to do so could result in serious injury or death.


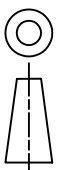
INSTALLATION INSTRUCTIONS

1. Determine pit dimensions (A, B, C). Consult dock leveler manufacturer's pit details for accurate sizes. **CHECK MEASUREMENTS OF PIT KIT TO SEE THAT IT ADHERES TO THEIR SPECIFICATION BEFORE INSTALLATION!** Ensure concrete pit slab is poured with a 1/2" slope downward from rear to front. Pit floor and opening must be clean of debris and ready to receive the Pit Kit.
2. Leave opening in foundation wall 12" wider than the finished pit width when pouring foundation.
3. The front curb angle should be set in the center of this opening when the foundation is poured. It is recommended that the pit floor be poured at the same time or at least before the dock floor is poured. Check pit depth to leveler manufacturer specification to determine position of front curb angle. (DIM. C)
4. Pour the pit floor 6" wider than the finished pit width (DIM. A) and 3" longer than the finished length including the foundation wall (DIM. B).
5. Set up Pit Kit; the sides will bolt to the back member which has three slotted holes on each side of it. The 3" flange will be at the top on all three members and to the outside of the pit. Top of flange should be level with dock floor. The side members must be placed flush with the outside face of foundation wall. Shim the Pit Kit if necessary. Observe that the top of the side panels and rear panel are flush. The assembly is ready to be anchored to the pit floor
6. Make sure the Pit Kit is square. Place a 2x4 or 2x6 brace at the middle top of the Pit Kit, also at the front top. Using Ram-set nails anchor the panels to the pit floor (Safety glasses and safety precautions must be taken during this operation) using the pre-dilled holes in the bottom flange of all 3 panels.
7. Bulk head the front of the Pit Kit on each side.
DOUBLE CHECK MEASUREMENTS OF PIT KIT VS DOCK LEVELER MANUFACTURER'S PIT DETAILS BEFORE POURING CONCRETE!
8. Pour concrete around the Pit Kit.
CAUTION: Do not use more concrete than what is normal for pit walls. Do not pour concrete too fast or it may cause bowing in the Pit Kit walls.
9. Remove bracing when concrete has hardened. Let the concrete cure.
10. Clean and finish off all areas where concrete was poured. Apply touch up paint to scratched areas.

You have now successfully installed your Pit Kit.



THIS DRAWING AND THE DESIGN SHOWN ARE THE PROPERTY OF DOCK BUMPER SOLUTIONS INC. REPRODUCTION OR USE OF THIS DRAWING FOR ANY PURPOSE OTHER THAN THAT SPECIFIED SHALL BE VIEWED AS INFRINGEMENT AND BE SUBJECT TO LEGAL ACTION

 DBS Driven to Safety		DOCK BUMPER SOLUTIONS INC. 181 REGINA ROAD VAUGHAN ONTARIO CANADA L4L 8M3	
SCALE:	NTS	DATE:	Apr.:
TITLE:		DATE:	
INSTALL DWG			
DRAWN BY:	WR	DATE:	12.2010
PART NO.			