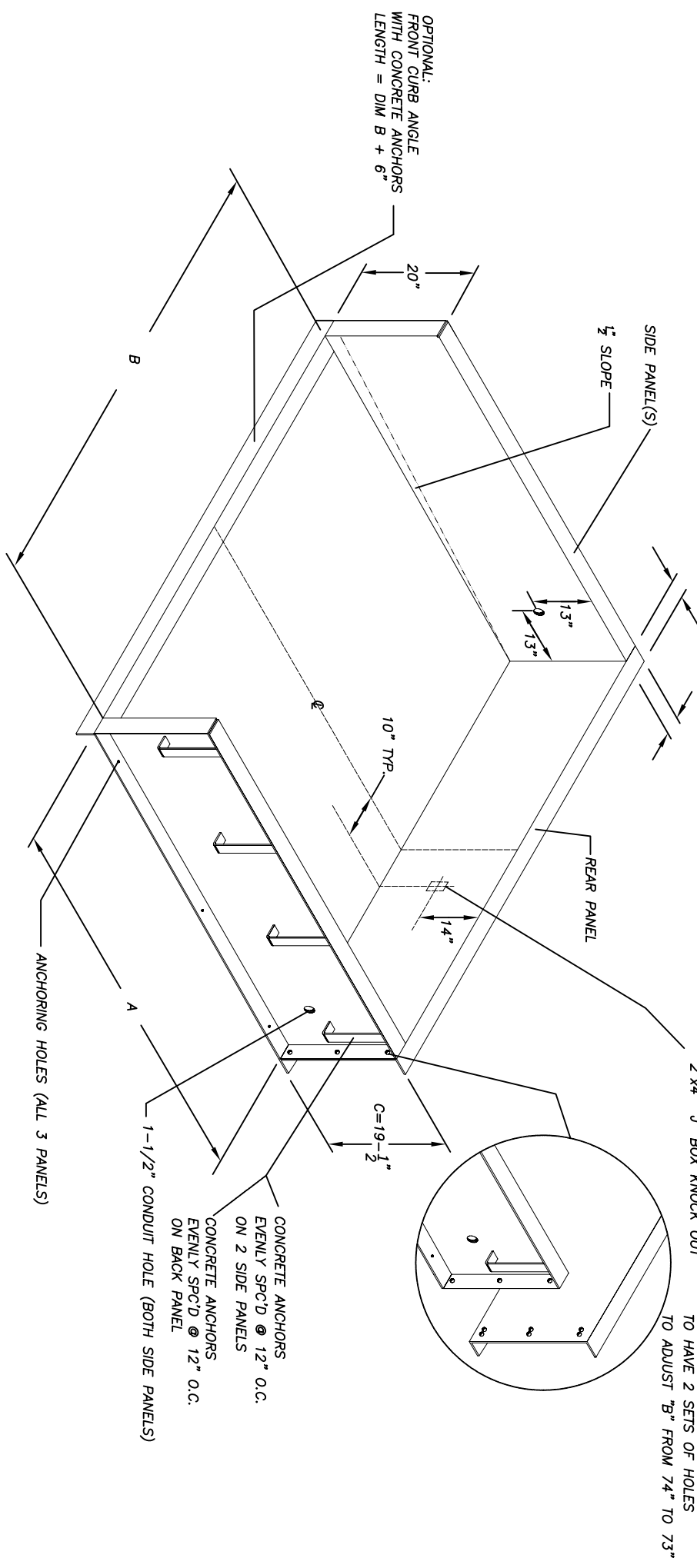


DIMENSIONAL CHART					
LEVELER WIDTH	LEVELER LENGTH	LEVELER DEPTH	A (I.D.) PIT LENGTH	B (I.D.) PIT WIDTH	C (I.D.) PIT DEPTH
6"	6'	20"	63"	74" or 73"	19-1/2"
6"	8'	20"	87"	74" or 73"	19-1/2"
7"	8'	20"	87"	85"	19-1/2"

**OPTIONAL CURB ANGLE SIZES:**

- 3" x 3" x 3/16" (CONC. ANCHORS @ 12" O.C.)
- 4" x 4" x 1/4" (CONC. ANCHORS @ 6" O.C.)



**PIT KIT HEAVY DUTY CONSTRUCTION:**

- 9 GA REAR PANEL (1)
- 9 GA SIDE PANELS (2)
- ALL FORMING PARTS HAVE 1.5" X 9 GA. CONC. ANCHORS AT 12" O.C.
- ALL PARTS PAINTED WITH 1 COAT GREY SHOP PRIMER (VISIBLE SIDE)

**NOTES:**

- ALL DIMENSIONS +/- 1/8" UNLESS OTHERWISE SPECIFIED
- CONCRETE BEHIND PIT KIT MUST BE WELL VIBRATED
- REAR PIT WALL MUST BE SQUARE TO DOCK FLOOR
- 8" MINIMUM CONCRETE THICKNESS FOR PIT WALLS, PIT FLOOR, AND DOCK FACE

THIS DRAWING AND THE DESIGN SHOWN ARE THE PROPERTY OF DOCK BUMPER SOLUTIONS INC. REPRODUCTION OR USE OF THIS DRAWING FOR ANY PURPOSE OTHER THAN THAT SPECIFIED SHALL BE VIEWED AS INFRINGEMENT AND BE SUBJECT TO LEGAL ACTION

**DBS**  
Driven to Safety  
DOCK BUMPER SOLUTIONS INC.  
181 REGINA ROAD  
VAUGHAN ONTARIO CANADA L4L 8M3

SCALE: NTS  
TITLE: PIT-KIT DWG  
DRAWN BY: WR  
DATE: 12.2010  
PART NO.