

lif# #! \$Ck log



CoM le#e CHeCkLi"# ("#eM

"+(O267 &2O3/(7(L,)7 "58&. 5(&25' ,1* 6<67(O 21 7+(OS5. (7. L,)7 "58&. L2* 11&8' (6:
 = DS,/< C+(&. L,676 - 624
 = ! (3S,5 ! (48(67 F25O6 - 24
 = A&&' (17 ! (3257 F25O6 - 4
 = N(\$5-O,66 ! (3257 F25O6 - 4
 = L2&. -287 "S* (5(48,5(' ,) 758&. ,6816S)(72 23(5S7()
 = M "5S&. ,1* H,6725< - 36 E9(176 (. 12: : +(1 72 6(59,&((S&+ 758&.)

"aM le CHeCkLi"#
 624 e%en#" e! log

Counterbalance Forklift Log Form	
Operator	
Time Start	
Make/Model	
Time End	
Make/Model	
Operator	
Visual Check	
Visual Inspection	
Engine Oil	
Water Level	
Brake Fluid	
Hydraulic Oil	
Light	
Warning Horn	
Operator's Seat	
Operator's Controls	
Operator's Safety	
Operator's Training	
Operator's License	
Operator's ID	
Operator's Signature	
Operator's Date	
Operational Check	
Operator's Name	
Operator's Title	
Operator's Shift	
Operator's Hours	
Operator's Location	
Operator's Equipment	
Operator's Status	
Operator's Remarks	
Operator's Initials	



ki# inCI Sde":
 log, la"#iC Ca"e,
 loCk-oS# #ag,
 and \$II-"#! a

NO"E: ! (*8/S7,21 67S7(6 7+S7 S
 /,)7 758&. % (,163 (&7(')25(7+
 % (*,11,1* 2) (S&+ 6+,)7 S1' S
 5(&25' % (. (37 21)/ (. " +
 C+ (& . /,67 CS' ' < ,6 S &2O3/(7
 6<67(O 7+S7 (1685(6 7+(23(5S725
 &2O3/(7(6 7+,6 ,O3257S17 7S6. .
 " + (CS' ' < ,6 S +, *+< 9,6,%/ (&\$6(
 7+S7 O28176 S1<: +(5(21 7+ (/,)7
 758&. . A *8\$5S17((' : \$< 72 (1685(
 (9(5<21(' 2(6 7+(,5 6S)(7<
 ,163(&7,216

CHeCkLi"# Cadd(

= O1(CS' ' < 4 1/2? ; 7? 32/<(7+</(1((19(/23(
 : ,7+ 7: 2-: \$< 7S3()25 (S6< O2817,1*.
 = O1(&+ (& . /,67 3S' : ,7+ 75 ,163 (&7,21 &\$5%21
 &23< 6+((76 \$9S,/S%/ ()25:
 E/(&75, &6,7- 2: 1 (E),
 523S1(6,7- 2: 1 (CB),
 NS552: \$,6/(N),
 S// (7 () 758&. 25 A(5,S/ #25. /S7)25O (A)
 = O1(3(1 : ,7+ \$77S&+(' 3/S67,& : ,5(



o#He! dB" !od\$C#"

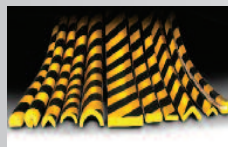
Wheel Chocks



Trailer Stands



Knuffi



Parking Blocks



Speed Bumps



e! go BaCk-\$ Handle

! (' 8&(%S&. 675\$,1 : ,7+ 7+(E5*2 BS&. -83 HS1' /(. O3(5S7256
: +2 \$5(5(48,5(' 72 75S9(/)5(48(17/< ,1 5(9(56(2)7(1 *5S% 7+(
29(5+(S' *8S5' .

" +,6 ,6 \$ ' S1*(5286 35S&7,&(\$1' +\$6 5(68/7(' ,1 6(5,286 ,1-85,(6.
= ES6(6 %S&. 675(66 : +(1 7851,1* \$5281' .
= F,76 S1< /,)7 758&. .
= 1167S//6 ,1 O,187(6.
= K((36 23(5S7256 +S1' ,16,' (7+(
23(5S725 &2O3S57O(17.
= O37,21S/ +251 6: ,7&+ S//2: 6 23(5S725
72 . ((3 /()7 +S1' 21 67((5,1* : +((/
(+\$5' : ,5(72 (; ,67,1* +251 25 %S77(5<
23(5S7(')25 (S6< ,167S//S7,21).



an#i-Blind " o# doMe Mi!! o!

L,)7 758&. 23(5S7256 1((' 72 . 12: : +\$7 ,6 *2,1* 21 S// \$5281'
7+(/,)7 758&. . " +,6 O,5525 *,9(6 \$ &2O3/(7(180@ 9,(: S//2: ,1*
7+(23(5S725 72 * ,9(\$ 48,&. 6S)(7< &+(&. %())25(7+(< 75S9(/ ,1
5(9(56(. 1167S//6 21 S1< /,)7 758&. ,1 6(&21' 6: ,7+ 3M 7: 2 6,' ('
7S3(.

A/62 \$9\$,/S%/ (: ,7+ \$ ' 85S%/(OS*1(7,& S5O 72 S77S&+ 72 S1<
O(7S/ 685)S&(.



9D doMe Mi!! o! &i#H
doSBle "ided #a e



9D doMe Mi!! o! &i#H
Magne# a!M Sni#



Traffic Control System



Bumpers



Dock Lights



Guard Max



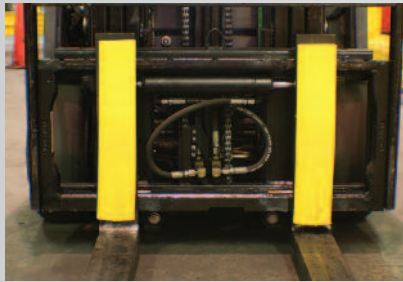
Flex Screen



") .- -B=58 F25. /,)7 527(&7256



"8- +1.1+) 4A , -;1/6- , .7: .7:34.<; , <0-;- *=58-; ; :- , =+ ,) 5)/-
16 5)6A)884+)<176; . ") .- -B=58)<<)+0-; ?k0 <?7 100 4*
5)/6- <;)6, (%HB) <?7 ?)A <)8-



"afe-BSM a##aChE" #o 4, 5D and 6D fo!k" in "eCond".



"afe-BSM i" onI(1.5D #HiCk and !o#eC#" !odSC# f!oM daMage.



"afe-BSM !o#eC#" Bo#H #He fo!klif# and an(#Hing i# Hi#".



"afe-BSM Can Bend 90E #o &!a a!oSnd Co!ne!" fo! Ma'iMSM !o#eC#ion.



S"ing #&o &a(#a e, non-Me#al "S! faCe" Can Be !o#eC#ed.

"IB- : 18D I @ 4D & @ 1.5D d M)/6- <; : <?7 100 4* 5)/6- <;

e)+0 *=58-: 16+4=, -; 2 5)/6- <; , <?7 ?)A <)8-)6, .7:3 *)+3- <; .

! o ane C(linde! Handling glo%e"



= >O1 HS1' %< DS1? */29(6 S5(86(' 72 6S)(/ &+\$1*(3523S1(&</,1' (56. A77S&+ 72 7+(29(5+(S' *8S5' 72 (1685(7+S7 7+(< S5(5(S' ,/< \$9S,/S%/ (.
= 523S1(C</,1' (5 HS1' /,1* G/29(6



"+(523S1(!(75S&72-G/29(,6 S 35S&7,&S/ 352' 8&7 : +,&+ (1685(6 7+S7 <285 */29(6 S5(S/: \$<6 S9S,/S%/(\$6 7+(< S5(6(&85(/< \$77S&+(' 72 <285 /,)7 758&.!! (75S&7S%/(\$1' 5(S' < 72 86(: +(1 &+\$1*,1* 3523S1(&</,1' (56. 523(5 +\$1' 3527(&7,21 ,6 5(48,5(' : +(1 : 25.,1* : ,7+ L,48,' 523S1(.



Dock Bumper Solutions Inc.
www.doksolutions.com

181 Regina Road
Vaughan ON, Canada L4L 8M3

Tel: 905-850-4015
E-mail: info@doksolutions.com
Web: www.doksolutions.com

